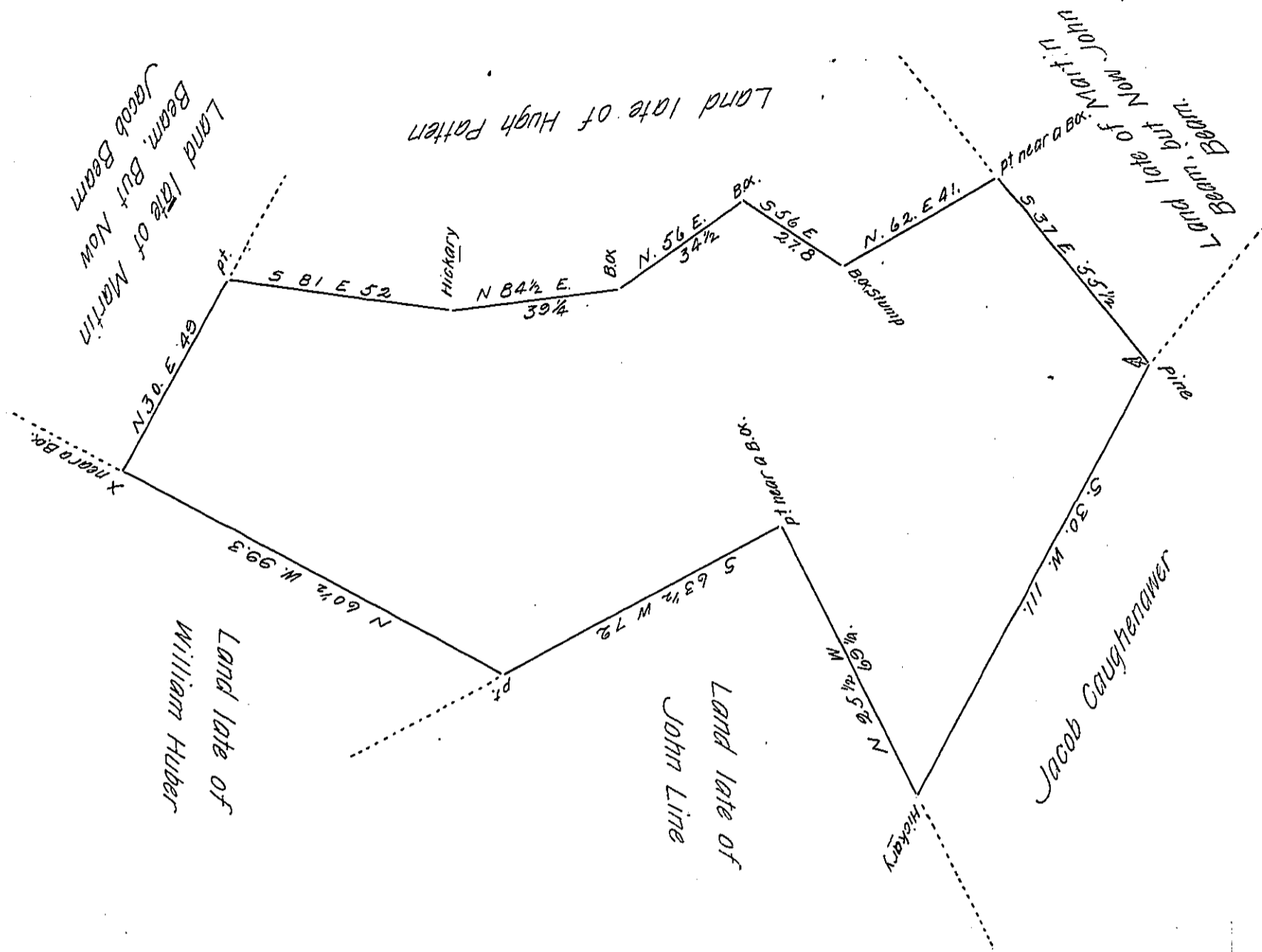


FORM NO. 1.



A Draught of a Tract of Land Situate in Carestogoe Township Lancaster County  
 Containing 100<sup>ac</sup> & 31 P.<sup>s</sup> & Allowance Surveyed the 25<sup>th</sup> Day of April A.D. 1806.  
 for Henry Resh Ju.<sup>r</sup> & Co. ( It being Part of a Larger Tract of 171<sup>ac</sup> & 91 P.<sup>s</sup> and  
 Allowance Surveyed unto Hugh Patten By Virtue of a Warrant Dated the 12<sup>th</sup> Day of  
 March A.D. 1752 & Co.

To Samuel Cochran Esq.  
 Surveyor General

P<sup>r</sup>. H. Ream D.S.  
 and Sam<sup>l</sup>. Ensmenger D.S.

IN TESTIMONY that the above is a copy of the original remaining on file in  
 the Department of Internal Affairs of Pennsylvania, made  
 conformably to an Act of Assembly approved the 16th day of  
 February, 1833, I have hereunto set my Hand and caused  
 the Seal of said Department to be affixed at Harrisburg,  
 this twentyfifth day of June 1906.

*Laac P. ...*  
 Secretary of Internal Affairs.